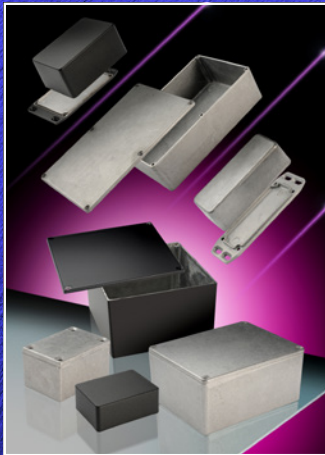


HAMMOND

Standard and modified aluminium, metal and plastic enclosures



1550 / 1590



1590Z



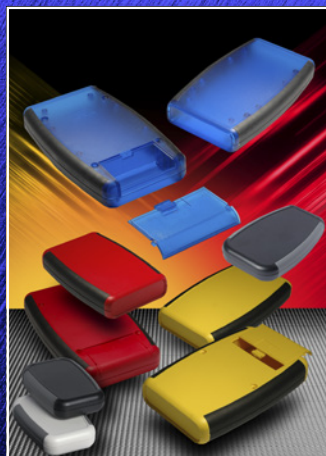
1455



1551V-SNAP



1552



1553



1553



1554 / 1555



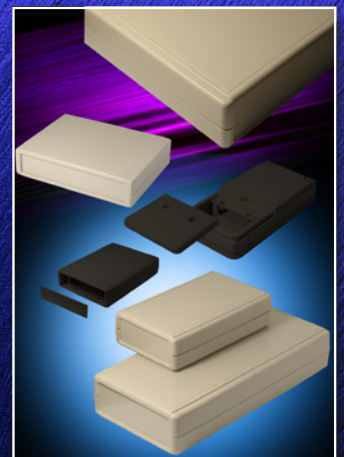
1557



1591 / 1591XX



EJSS



Ritec

www.hammmfg.com

Plastic enclosures



1551



1551V



1552



1553



1553T



1553W



1554/1555



1557

Family	Type	IP	Min size L x W x H	Max size L x W x H	sizes	Material*	Colours
1551	miniature plain lid	54	35 x 35 x 15	100 x 40 x 20	18	ABS	BK, GY, TBU
1551FL	miniature flanged lid	54	35 x 35 x 15	100 x 40 x 20	18	ABS	BK, GY
1551MINI	subminiature plain	54	35 x 20 x 15	65 x 30 x 15	3	ABS	Various
1551SNAP	miniature plain lid	30	40 x 40 x 20	80 x 80 x 20	7	ABS	BK, GY, WH
1551USB	miniature USB specific	54	35 x 20 x 15	65 x 30 x 15	3	ABS	Various
1551V	miniature ventilated	30	40 x 40 x 20	80 x 80 x 20	4	ABS	BK, GY, WH
1552	hand-held	54	70 x 50 x 22	150 x 50 x 30	7	FR ABS	BK, GY
1553	hand-held plain	54	75 x 50 x 17	147 x 89 x 25	5	ABS	Various
1553	hand-held, battery box	54	117 x 79 x 24	147 x 89 x 25	3	ABS	Various
1553T	two end panels	54	165 x 80-68 x 28	210 x 100-86 x 32	2	FR ABS	BK, GY
1553T	one end panel, battery box	54	165 x 80-68 x 28	210 x 100-86 x 32	2	FR ABS	BK, GY
1553W	watertight plain	65	117 x 79 x 25	147 x 90 x 25	3	FR ABS	BK, GY
1554	watertight flat lid	66	66 x 66 x 41	300 x 240 x 120	32	ABS	GY
1554-2	watertight flat lid	68	66 x 66 x 41	300 x 240 x 120	32	PC	GY
1554-2CL	watertight flat clear lid	68	66 x 66 x 41	300 x 240 x 120	32	PC	GY
1554-2SL	watertight flat smoked lid	68	66 x 66 x 41	300 x 240 x 120	32	PC	GY
1554PB	pushbutton	66	90 x 90 x 60	300 x 240 x 120	14	PC	GY
1555	watertight styled lid	66	66 x 66 x 41	300 x 240 x 120	32	ABS	GY
1555-2	watertight styled lid	68	66 x 66 x 41	300 x 240 x 120	32	PC	GY
1555-2F	watertight flanged lid	68	65 x 65 x 42	180 x 119 x 62	15	PC	GY
1555F	watertight flanged lid	66	65 x 65 x 42	180 x 119 x 62	15	ABS	GY
1557	watertight wall mount	68	80 x 80 x 45	200 x 200 x 70	8	PC	BK, GY
1557	watertight wall mount	66	80 x 80 x 45	200 x 200 x 70	8	ABS	BK, GY
1590ZGRP	watertight deep plain lid	66	81 x 75 x 55	600 x 250 x 160	18	GRP	BK, GY

Material*: FR ABS denotes ABS flame retardant to UL94-V0. PC: polycarbonate.

Colours: BK black, BU blue, CLR clear, GY grey, RD red, YL yellow, TBU translucent blue, TCL translucent clear, TCS translucent smoked, TRD translucent red. WH white. Various: refer to web site for specific family colour options.

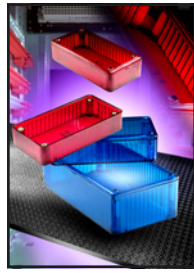
Other colours for all products available to special order.

www.hammfg.com • uksales@hammfg.com • eusales@hammfg.com • + 44 1256 812812

Plastic enclosures



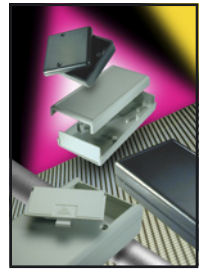
1590Z



1591



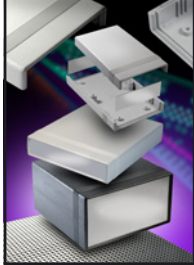
1591XX



1593



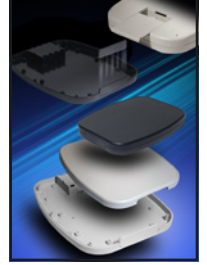
1597DIN



1598



1599



1599 Tablet

Family	Type	IP	Min size L x W x H	Max size L x W x H	sizes	Material*	Colours
1591	plain lid	54	84 x 56 x 26	190 x 110 x 61	13	FR ABS	Various
1591-FL	flanged lid	54	84 x 56 x 26	190 x 110 x 61	13	FR ABS	BK, GY
1591-F2	flanged base	54	84 x 56 x 27	190 x 110 x 61	13	FR ABS	BK, GY
1591XX	no PCB guides plain lid	54	84 x 56 x 27	221 x 150 x 62	12	FR ABS	BK, GY, TBU
1591XX-FL	no PCB guides flanged lid	54	84 x 56 x 27	221 x 150 x 62	12	FR ABS	BK, GY
1591-S	PCB guides plain lid	54	84 x 56 x 26	190 x 110 x 61	13	ABS	BK, GY
1591-SFL	PCB guides flanged lid	54	84 x 56 x 26	190 x 110 x 61	13	ABS	BK
1591-F2S	PCB guides flanged base	54	84 x 56 x 27	190 x 110 x 61	13	ABS	BK, GY
1591-T	PCB guides translucent	54	99 x 51 x 24	191 x 109 x 60	6	PC	CLR, TBU, TRD
1591XX-S	no PCB guides plain lid	54	84 x 56 x 27	221 x 150 x 62	12	ABS	BK
1591XX-SFL	no PCB guides flanged lid	54	84 x 56 x 27	221 x 150 x 62	12	ABS	BK
1591XX-TBU	no PCB guides translucent	54	84 x 56 x 27	193 x 112 x 60	10	ABS	TBU
1593	plastic panels	54	60 x 105 x 35	140 x 66 x 28	9	ABS	BK, GY, TBU
1593	plastic panels & battery box	54	91 x 66 x 21	140 x 66 x 28	5	ABS	BK, GY, TBU
1593AL	aluminium panels	54	66 x 66 x 28	140 x 66 x 28	10	ABS	BK, GY, TBU
1593AL	aluminium, battery box	54	91 x 66 x 21	140 x 66 x 28	3	ABS	BK, GY, TBU
1594-W	watertight	66	56 x 56 x 40	168 x 107 x 65	5	FR ABS	BK, GY
1594	heavy duty flame retardant	54	56 x 56 x 40	168 x 107 x 65	5	FR ABS	BK, GY
1594-S	heavy duty standard	54	56 x 56 x 40	168 x 107 x 65	5	ABS	BK, GY
1596	potting boxes no lid	-	11 x 11 x 9	100 x 60 x 25	15	ABS	BK
1597DIN	DIN rail mounting	-	90 x 23 x 118	90 x 158 x 58	5	ABS	GY
1598	aluminium end panels	54	134 x 135 x 50	280 x 200 x 76	10	FR ABS	BK, GY
1598-S	aluminium end panels	54	134 x 135 x 50	280 x 200 x 76	10	ABS	GY
1598-SP	plastic end panels	54	134 x 135 x 50	280 x 200 x 76	10	ABS	GY/BK
1599	hand held	54	130 x 65 x 25	220 x 140 x 41	4	FR ABS	BK, GY
1599	hand held with battery box	54	130 x 65 x 25	220 x 140 x 41	4	FR ABS	BK, GY
1599-S	hand held	54	130 x 65 x 25	220 x 140 x 41	4	ABS	GY
1599-S	hand held with battery box	54	130 x 65 x 25	220 x 140 x 41	4	ABS	GY
1599-T	sloping desktop consoles	-	86 x 170 x 34-19	220 x 140 x 41-18	4	FR ABS & ABS	BK, GY
1599 Tablet	tablet hand held	54	120 x 95 x 27	240 x 190 x 30	3	FR ABS	BK, GY

Material*: FR ABS denotes ABS flame retardant to UL94-V0. PC: polycarbonate.

Colours: BK black, BU blue, CLR clear, GY grey, RD red, YL yellow, TBU translucent blue, TCL translucent clear, TCS translucent smoked, TRD translucent red. WH white. Various: refer to web site for specific family colour options.

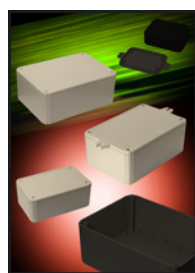
Other colours for all products available to special order.

www.hammfg.com • uksales@hammfg.com • eusales@hammfg.com • + 44 1256 812812

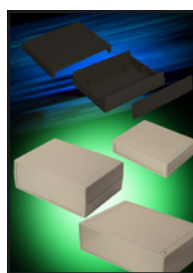
Ritec plastic enclosures



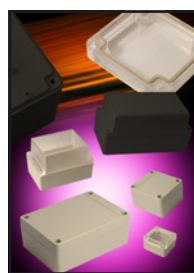
RH Series



RL Series



RM Series



RP Series



RS Series



RZ Series

Family	Type	IP	Min size L x W x H	Max size L x W x H	Sizes	Material	Colours
RH Series	no battery box	54	100 x 60 x 25	190 x 100 x 40	8	ABS	GY
RH Series	with battery box	54	130 x 68 x 25	160 x 84 x 30	2	ABS	GY, BK
RH Series	with battery box	65	130 x 68 x 25	160 x 84 x 30	2	ABS	GY, BK
RL Series	deep lid	54	104 x 65 x 40	205 x 105 x 40	4	ABS	GY, BK
RL Series	shallow lid	54	80 x 60 x 30	200 x 150 x 100	15	ABS	GY, BK
RL Series	flanged lid	54	80 x 60 x 30	200 x 150 x 100	15	ABS	GY, BK
RM Series	instrument	43	105 x 80 x 25	250 x 180 x 100	12	ABS	BE, BK
RP Series	standard lid	65	65 x 60 x 28	220 x 165 x 85	26	ABS	GY
RP Series	clear lid	65	65 x 60 x 28	250 x 200 x 130	28	ABS / PC	GY
RP Series	standard lid	65	65 x 60 x 28	250 x 200 x 130	28	PC	GY
RP Series	flanged base	65	65 x 60 x 40	186 x 146 x 110	23	ABS / PC	GY
RP Series	clear lid flanged base	65	65 x 60 x 40	186 x 146 x 110	23	ABS / PC	GY
RS Series	styled lid	65	105 x 105 x 55	250 x 200 x 130	4	ABS	GY
RZ Series	plain and clear lids	65	52 x 50 x 35	222 x 146 x 75	10	ABS / PC	GY

PC: polycarbonate. Colours: BE beige, BK black, GY grey. Other colours for all products available to special order.

General accessories

Type	Description	Web page for full details
Rubber Feet	1421 Series. 11 different sizes of square and round rubber feet in clear or black for instrument cases. Mainly self-adhesive, some with self-tapping screw fixings.	hammfg.com/1421-feet
Cord Grips	Liquid-Tight Cord Grips made from either Nylon or Nickel Plated Brass. Accepts a wide range of cable diameters with protection up to IP68.	hammfg.com/1427ncg and hammfg.com/1427bcg
Pole Mount Kits	Pole mounting brackets designed for the Hammond series 1554, 1555, 1555F, 1557, 1590Z & 1590ZGRP.	hammfg.com/pmb
DIN Rail Clips	1427 Series. 45mm long nylon and 42, 75 and 100mm long heavy duty aluminium clips for mounting enclosures to standard 35mm DIN rails.	hammfg.com/1427dinclip
Handles	1427 and M Series. Multiple sizes of round metal, styled plastic and aluminium, square and oval metal, vinyl and folding handles.	hammfg.com/electronics/small-case/accessories#handles
Screw Packs	Replacement packs of 29 different screws for Hammond enclosures.	hammfg.com/dwg23.htm
Battery Holders	Holders for 1, 2, 3 and 4 AAA, 1 and 2 AA and 1 9V batteries.	hammfg.com/dwg23.htm

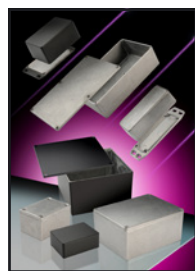
Die-cast aluminium enclosures



1550W/1590W



1550Z



1550/1590



1590 STOMP



1590Z



Eddystone

Die-cast enclosures

Die-cast enclosures offer outstanding mechanical protection, are corrosion resistant and give good EMC screening.

The four main families are available in either plain or painted finish and offer a wide choice of sizes and features. Plain or flanged lids and bases, integral PCB slots, PCB mounting stand-offs and earthing points, gasket kits to enhance the IP rating and thin and thick wall versions can all be specified.

Standard wall	Type	IP	Min size L x W x H	Max size L x W x H	Sizes
1550	Plain lid, plain base	54	60 x 55 x 30	275 x 175 x 66	15
1550W	Plain lid, plain base	66 and 67	60 x 55 x 30	275 x 175 x 66	15
1590	Plain lid, plain base	54	51 x 51 x 25	254 x 70 x 50	37
1590FL	Flanged lid, plain base	54	51 x 51 x 25	254 x 70 x 50	31
1590F	Plain lid, flanged base	54	51 x 51 x 25	254 x 70 x 50	32
1590W	Plain lid, plain base	65	51 x 51 x 25	254 x 70 x 50	37
1590W-F	Plain lid, flanged base	65	51 x 51 x 25	254 x 70 x 50	32
1590W-FL	Flanged lid, plain base	65	51 x 51 x 25	254 x 70 x 50	31
1590 RIBBED	Plain lid, plain base	54	50 x 50 x 31	192 x 111 x 61	7
1590 RIBBED FL	Flanged lid, plain base	54	121 x 66 x 40	153 x 83 x 50	2
1590 RIBBED F	Plain lid, flanged base	54	101 x 50 x 25	192 x 112 x 61	5
1590W RIBBED	Plain lid, plain base	65	121 x 66 x 40	153 x 83 x 50	2
1590W RIBBED FL	Flanged lid, plain base	65	121 x 66 x 40	153 x 83 x 50	2
1590W RIBBED F	Plain lid, flanged base	65	121 x 66 x 40	153 x 83 x 50	2
1590STOMP rectangular	Plain lid, plain base	54	100 x 50 x 31	145 x 121 x 39	9
1590STP octagonal	Plain lid, plain base	54	133 x 133 x 39	133 x 133 x 39	1
1590TRP trapezoidal	Plain lid, plain base	54	112 x 79-61 x 39	95 x 151-122 x 39	2
1590K Zinc	Plain lid, plain base	54	112 x 62 x 31	188 x 120 x 56	3
Eddystone	Plain lid, plain base	54	52 x 38 x 31	188 x 120 x 82	10

Thick wall heavy duty	Type	IP	Min size L x W x H	Max size L x W x H	No of sizes
1550Z	Plain lid, plain base	66	50 x 45 x 30	223 x 147 x 83	18
1590Z	Plain lid, plain base	68	50 x 45 x 30	400 x 230 x 180	23

Eddystone and 1590K available in natural finish only. 1590Z available in natural, black and grey.

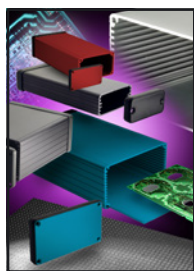
Colours for all others except 1590 STOMP boxes: natural and black.

STOMP box colours: Cobalt Blue, Green, Light Grey, Orange, Purple, Red, Yellow.

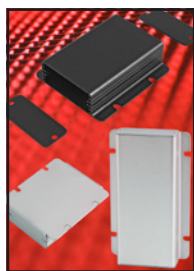
Other colours for all products available to special order.

www.hammfg.com • uksales@hammfg.com • eusales@hammfg.com • + 44 1256 812812

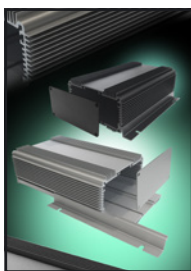
Extruded enclosures



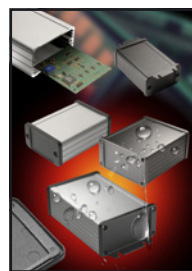
1455



1455F



1455HD



1457



1457-E

Extruded enclosures

Extruded enclosures are available in different widths and depths. PCBs are retained horizontally in slots in the extrusion and plastic and aluminium end panels are available. The 1457 variant is fitted with either IP65 rated or EMC screened end panels and gaskets to enable use in harsh environments. The 1455 is available in clear, blue, red and black anodise and the 1457 in clear anodise or black paint. The 1457 is available with either flanged or plain end panels. The channel mount versions feature recessed channels on both sides that accept T-bolts for easy mounting to rails or surfaces. The Sink Box has fins on the top to aid heat dissipation; it is sized to accept 85mm or 100mm Eurocard PCBs mounted horizontally, it also features three T Slots for securing components or chassis to the top or base.

Family	Type	IP	Min size L x W x H	Max size L x W x H	Sizes	Colours
1455	aluminium panels	-	60 x 45 x 25	280 x 191 x 66	33	CLR, BK, BU, RD
1455	plastic panels	-	60 x 45 x 25	280 x 191 x 66	32	CLR, BK, BU, RD
1455F	flanged	-	80 x 77 x 23	120 x 77 x 23	2	CLR
1455NC	channel mount aluminium or plastic panels	-	120 x 103 x 53	220 x 103 x 53	3	CLR
1455HD	heat dissipating aluminium panels external mounting flanges	-	120 x 86 x 51	160 x 111 x 61	4	CLR, BK
1455ZT	wall mount	-	160 x 89 x 56	220 x 89 x 56	2	CLR, BK
1457	die-cast plain panels	65	80 x 59 x 31	280 x 191 x 68	15	CLR, BK
1457	die-cast flanged panels	65	80 x 59 x 31	280 x 191 x 68	15	CLR, BK
1457-E	EMC screened die-cast plain panels	54	80 x 59 x 31	280 x 191 x 68	15	CLR, BK
1457-E	EMC screened die-cast flanged panels	54	80 x 59 x 31	280 x 191 x 68	15	CLR, BK

Colours: BK black, BU blue, CLR clear, RD red.

Rack Mount Units



RMU

Aluminium Rack Mount Units

The RM family of rack mounting and desktop enclosures are available in 19" 1 - 4U, 203 - 711mm deep and half width 1 - 3U 108 and 203mm deep with plain or vented top and base covers. The front and rear panels are interchangeable and all 19" sizes are supplied with front panel mounting angles. Adjustable rear panel mounting angles are also available as an accessory for the 457, 559 and 711mm deep versions.

The RMC family is available in 19" 1 - 6U, 203 - 381mm deep and half width 1 - 3U, 203mm deep versions with plain or vented top and base covers. An internal aluminium chassis is optionally available.



RMC

Family	Size	Height	Depth	Top cover	Base cover
RMU	422mm 19"	1, 2, 3, 4U	203, 330, 457, 559, 711mm	solid or ventilated	solid or ventilated
RMU	211mm half width	1, 2, 3U	108 and 203mm	solid or ventilated	solid or ventilated
RMCS	422mm 19"	1, 2, 3, 4, 5, 6U	203, 330 and 381mm	solid	solid
RMCS	216mm half width	1, 2, 3U	203mm	solid	solid
RMCV	422mm 19"	1, 2, 3, 4, 5, 6U	203, 330 and 381mm	ventilated	ventilated
RMCV	216mm half width	1, 2, 3U	203mm	ventilated	ventilated

Sealed industrial enclosures



1554/1555



1555F



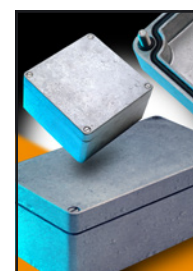
PCJ



PJU



EJSS



1590Z

In factory environments the level of protection against the ingress of dust and water is a significant factor in the specification criteria. Defined in EN 60529 as IPxx, where the first digit defines the protection against solid objects and the second the protection against water ingress, IP ratings of 65, 66, 67 or IP68 have become the norm in the enclosure specification. Hammond has many well-established field-proven product families that provide the level of protection required.

Family	IP	Material and characteristics
1554/1555	PC: 68, ABS: 66	ABS and PC with plain and styled lids.
1555F	PC: 68, ABS: 66	ABS and PC with integral mounting flanges.
PCJ	66	PC junction box with latching lockable cover.
PJU	66	GRP junction box with hinged cover.
EJSS	66	304 stainless steel junction box with continuous hinged cover.
1590Z	68	Die-cast aluminium.

Wall boxes and rack accessories

RB-FW 6, 9, 12 and 15U wall boxes feature a lockable glass front door and lockable side panels to give good security. Two pairs of adjustable 19" mounting rails are provided. The front and sides of the frame are ventilated and locations for two fans are provided in the top cover. Cable access is through the rear.

An extensive range of rack accessories, compatible with any IEC 60297 compliant enclosure, provides an easy method of housing equipment of varying sizes, weights and access and cabling requirements in a rack or cabinet.

Type	Description. Visit hammfg.com/dci/products/accessories for full details
Shelves	Adjustable, Cantilever, Centred, Deep Channel, Keyboard and Clamping Shelves, Locking Drawer and Rail Depth Adapter.
Cable Management	Horizontal, Vertical and Overhead Managers, Lacing Bars, Cable Rings, Cable Chimneys.
Panels	Steel, Aluminium and Plastic Panels, Panel Covers and Monitor Panels.
Mounting Hardware	Rack Screws, Thumb Screws, Cage Nuts, Clip Nuts and Ganging Kits.
Chassis Supports	Rackmount Chassis Supports and Side Support Angles.
Grounding kits	Grounding Leads, Busbars, Isolation and Lugs
Doors	Cabinet Doors, Door Accessories and Cable Entries
Handles and Locks	Pull Handles, Combination, Electronic and Panel Locks
Castors and Feet	Castors, Levelling Feet and Bolting Down Kits

Power distribution strips

Type	1U Rack Mount or Desktop IEC power strips with single or double pole switch and 10A circuit breakers	Web page for full details
1U Rack Mount DPST	100 - 240 VAC inputs via IEC320 C14 plug. Eight front or rear facing IEC320 C13 outlet sockets, DPST switch and 10A circuit breaker.	hammfg.com/electronics/outlet-strips/standard/1582edp
1U Desktop DPST	100 - 240 VAC inputs via IEC320 C14 plug. Four, five, six or eight top mounted IEC320 C13 outlet sockets, DPST switch and 10A circuit breaker.	hammfg.com/electronics/outlet-strips/standard/1581dp
1U Rack Mount SPST	100 - 240 VAC inputs via IEC320 C14 plug. Eight front or rear facing IEC320 C13 outlet sockets, SPST switch and 10A circuit breaker.	hammfg.com/electronics/outlet-strips/rack-mount/1582e
1U Desktop SPST	100 - 240 VAC inputs via IEC320 C14 plug. Four, five, six or eight top mounted IEC320 C13 outlet sockets, SPST switch and 10A circuit breaker.	hammfg.com/electronics/outlet-strips/standard/1581

Factory modification services for aluminium, metal and plastic enclosures

We can modify any of our standard enclosures in-house to meet the specific requirements of the application. Our pricing is economical for pre-production, start-up and production quantities. Orders can be placed directly with us or through our network of distributors. Our in-house modification capabilities include CNC milling, drilling, engraving, UV digital and silk screen printing, pressed in hardware, custom colours for moulded enclosures and a variety of different paint finishes for metal enclosures. In addition to the fabrication capability, service is another key focus. PDF drawings or CAD files for all products are available on www.hammondmfg.com, allowing customers easily to specify the modifications required.

We offer

- fast pre-production samples
- machining
- custom lengths up to 1000 mm for extruded cases
- UV digital printing
- silk screening
- special paint or moulded colours
- custom kitting and packaging

Contact us to discuss your requirements

- call to discuss the options with our technical sales team
- download PDF drawings or AutoCAD files from our web site
- mark up the drawings or amend the AutoCAD files
- email your amended files to us
- receive your quotation
- place your order
- **leave the rest to us**



Hammond enclosures are available from our global network of distribution partners.

Hammond Electronics Limited

1 Onslow Close • Kingsland Business Park • Basingstoke • RG24 8QL • United Kingdom

For the contact details of our distribution partners

and to download PDF datasheets and AutoCad files, visit www.hammfg.com

www.hammfg.com • uksales@hammfg.com • eusales@hammfg.com • + 44 1256 812812